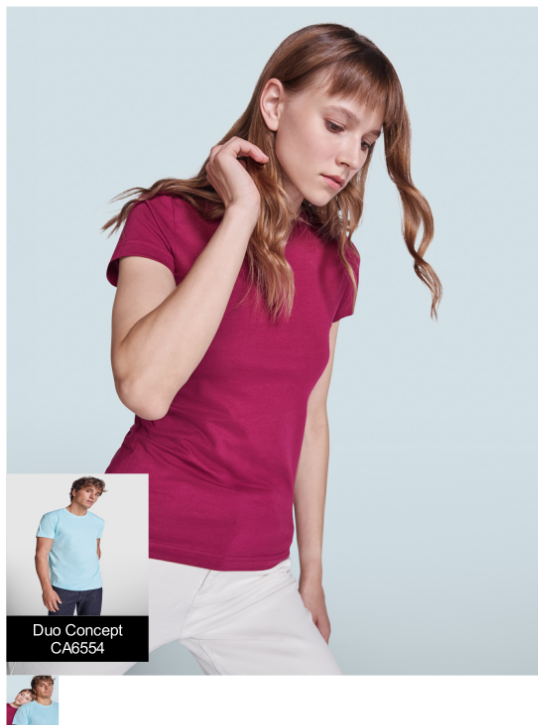


JAMAICA CA6627



DESCRIPTION

Fitted short-sleeve t-shirt. 1x1 double layer rib crew neck and covered seams from shoulder to shoulder. Side seams. T-shirt available in 21 colours.

COMPOSITION

100% cotton, single jersey, 155 gsm. Heather grey 58: 85% cotton / 15% viscose.

REMARKS

*Removable label. *Kids sizes available. *Men's available.

SIZES

Adults:: S · M · L · XL · 2XL · 3XL / Kids:: 1/2 · 3/4 · 5/6 · 7/8 · 9/10 · 11/12

SCHEME



QUANTITIES

| | Box | Pack |
|----------------|---------|-------|
| Adults: | 100 un. | 5 un. |
| Kids: | 100 un. | 5 un. |

COLORS



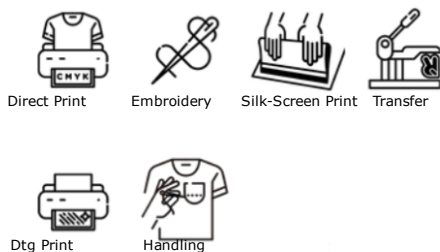
SIZES

| Adults: | S | M | L | XL | 2XL | 3XL |
|-----------|------|------|------|------|------|------|
| WIDTH (A) | 41cm | 44cm | 47cm | 50cm | 54cm | 57cm |
| LONG (B) | 62cm | 64cm | 66cm | 68cm | 69cm | 70cm |

| Kids: | 1/2 | 3/4 | 5/6 | 7/8 | 9/10 | 11/12 |
|-----------|--------|--------|--------|--------|--------|--------|
| WIDTH (A) | 30cm | 32cm | 34cm | 36cm | 38cm | 40cm |
| LONG (B) | 39.5cm | 42.5cm | 45.5cm | 48.5cm | 51.5cm | 54.5cm |

*[Measured from the edge 1 cm below the sleeves / Measured from the highest point of the shoulder to the end of the garment]

PRINTING TECHNIQUES AVAILABLE



CERTIFICATES

